

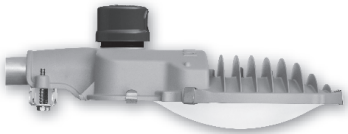
EVLUMA AREAMAX™

LED STREET, AREA AND SECURITY LIGHTING
REPLACES HID DUSK-TO-DAWN LUMINAIRES 100-250W

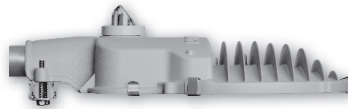
AMAX 80 AMAX 100

DESCRIPTION

The AreaMax LED luminaire for street and area lighting is a robust, utility-grade luminaire designed to last for years. Easy to install, the AreaMax saves energy and maintenance time. Perfect for residential street lighting, parking lots, or rural security applications requiring either full cutoff, or maximal visibility with a diffuse, low-glare light. AreaMax ship with Photocontrol Failsafe™ built-in and the option to activate ConnectLED™ features with the purchase of the Evluma custom Bluetooth application.



reuse existing photocontrol with S3 option (dome lens shown)



Evluma integrated photocontrol with P option (flat lens shown)



CERTIFICATION DATA

UL 1598. MET Labs
IP66. IEC 60529
ASTM D2247-68
FM 4473
ANSI C136.31-2010 Level 2
Vibration Bridge/Overpass
EPA under 0.5 sq ft

ENERGY DATA

PF >99% at 120 VAC
THD <8% at 120 VAC
PF >91% at 277 VAC
THD <10% at 277 VAC
<1/2W off-state power
Driver Lifetime >100,000 hrs
-40°C Min / 50°C Max AM Temp

SHIPPING DATA

Pallet Qty:
56 units, 580 lbs

Construction & Finish

Cast aluminum housing with gray powder coat. Hinged access panel is galvanized steel with spring clips to allow for easy open and close. Color by custom order.

Optical (lens)

Textured glass and a white, optical-grade reflective film liner combine to create a bright, diffuse light.

Electrical

Evluma proprietary Class II driver. Dimmable. Patented. 90-277 VAC 50/60 Hz High capability surge protection for 20kV/10kA per IEEE/ANSI C62.41.2 - 2002. Location Category C-High.

Thermal Management

LED life is ensured by thermal management protection circuitry that controls current levels to the LEDs based on temperature. Critical components were selected for their minimal thermal resistance then paired with a custom light engine and casting design to maximize cooling.

Mounting

Stainless steel tenon clamp and stainless steel screws accept 2" (5.08 cm), or 1 1/4" (3.17 cm) diameter arm.

Lumen Maintenance

L70 (10,000) > 60,000 hrs
LM at 10,000 hours = 99%
LM at 100,000 hours > 90%

LM 80 and ISTMT available at www.evluma.com
TM 21 calculations available upon request.

Warranty

Ten-year warranty.
Visit www.evluma.com/products/warranty/

EVLUMA AREAMAX™

ORDERING INFORMATION

SAMPLE NUMBER: AX-100-50-5-D-S7-CST-6

PRODUCT FAMILY	WATTS	CCT	DISTRIBUTION TYPE	LENS (options)	PHOTOCONTROL SOCKET (options)	ENVIRONMENTAL PACKAGE (options)	LEADS (options)
AX = AreaMax	80 = 80 watts 100 = 100 watts	27 = 2700K 30 = 3000K 40 = 4000K 50 = 5000K	5 = type V 3 = type III	D = dome C = cutoff	P = integrated S3 = 3 pin socket S7 = 7 pin socket	STD = std outdoor CST = coastal	6 = 66" 10 = 10' 20 = 20' N = none

80W PERFORMANCE

recommended to replace 150-200W HID
CRI for all models > 70

Code	Lumens	LM/W	BUG
50 5 (C)	10,100	127	B3-U0-G1
50 5 (D)	10,300	129	B3-U2-G2
40 5 (C)	10,800	135	B3-U0-G1
40 5 (D)	10,800	136	B3-U2-G2
30 5 (C)	10,800	135	B3-U0-G1
30 5 (D)	10,800	135	B3-U2-G2
27 5 (C)	8,400	106	B3-U0-G1
27 5 (D)	8,560	107	B3-U2-G1
50 3 (C)	10,200	128	B3-U0-G2
50 3 (D)	10,600	133	B3-U3-G3
40 3 (C)	10,300	129	B3-U0-G2
40 3 (D)	10,700	134	B3-U3-G3
30 3 (C)	10,200	128	B3-U0-G2
30 3 (D)	10,600	133	B3-U3-G3
27 3 (C)	8,000	101	B2-U0-G2
27 3 (D)	8,400	105	B3-U2-G3

100W PERFORMANCE

recommended to replace 150-250W HID
CRI for all models > 70

Code	Lumens	LM/W	BUG
50 5 (C)	12,200	122	B3-U0-G1
50 5 (D)	12,500	125	B3-U3-G2
40 5 (C)	12,900	129	B3-U0-G2
40 5 (D)	13,200	132	B3-U3-G2
30 5 (C)	12,800	128	B3-U0-G2
30 5 (D)	13,100	131	B3-U3-G2
27 5 (C)	10,200	102	B3-U0-G1
27 5 (D)	10,400	104	B3-U2-G2
50 3 (C)	12,300	123	B3-U0-G3
50 3 (D)	12,800	128	B3-U3-G3
40 3 (C)	12,400	124	B3-U0-G3
40 3 (D)	12,900	129	B3-U3-G3
30 3 (C)	12,300	123	B3-U0-G3
30 3 (D)	12,800	128	B3-U3-G3
27 3 (C)	9,700	97	B3-U0-G2
27 3 (D)	10,100	101	B3-U3-G3

Accessories

AMAX-LTS Stainless steel light trespass shield (order separately)

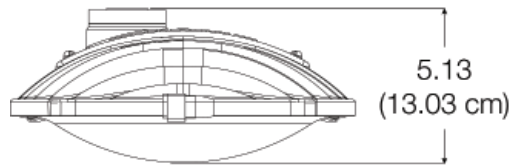
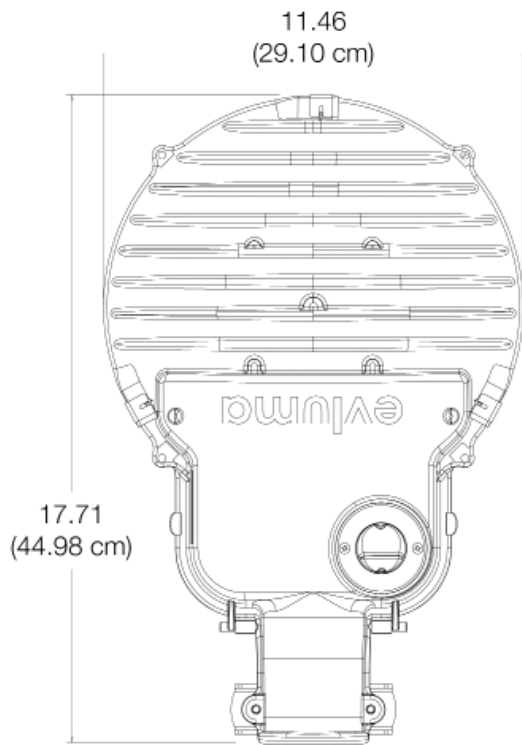
Coastal Environmental Package Option

Corrosive coastal environments have unique requirements. A housing made from cast aluminum alloy with an anti-corrosion chromate coating plus an aluminum access panel, a stainless steel tenon clamp and all stainless steel fasteners guarantee longevity in harsh, wet environments. Required for applications 2000 ft. from a salt water body.

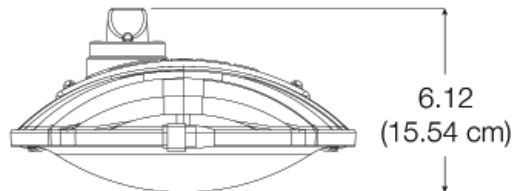
Components	Standard	Coastal
Housing	cast aluminum alloy	cast aluminum alloy (low copper content)
Coating	polyester powder coat	corrosion-resistant chromate coating
Access Panel	galvanized steel	aluminum
Tenon Clamp	stainless steel	stainless steel
Bolts	stainless steel	stainless steel

EVLUMA AREAMAX™

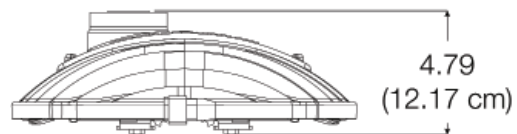
DIMENSIONS (inches)



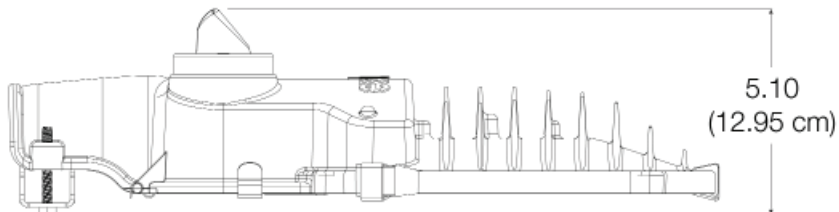
S3 option
dome lens
(S7 option 5.81)



integrated (P) option
dome lens



S3 option
flat lens (
S7 option 4.79)



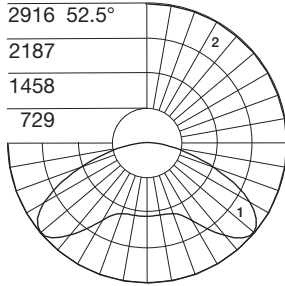
integrated photocontrol option
flat lens

EVLUMA AREAMAX™

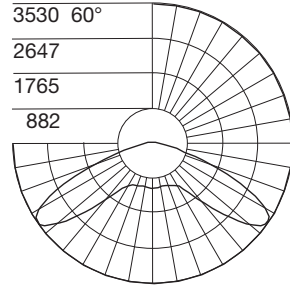
80W DISTRIBUTION OF LUMINOUS INTENSITY MODELS

Polar Candela Distributions: Vertical Plane (1) and Horizontal Cone (2) through maximum candela

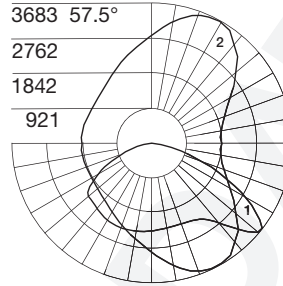
80W 50-5-C Flat Lens



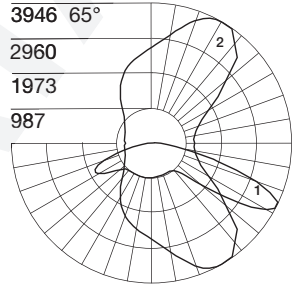
80W 50-5-D Dome Lens



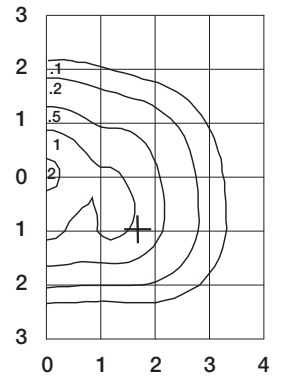
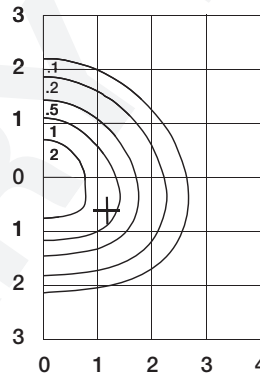
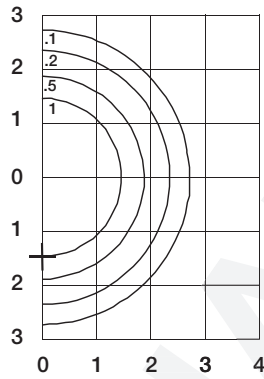
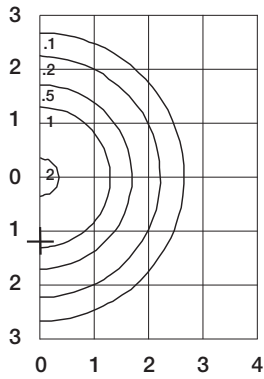
80W 50-3-C Flat Lens



80W 50-3-D Dome Lens



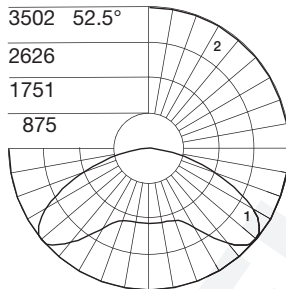
Isofootcandle Lines of Horizontal Illuminance. 25ft Mounting Height



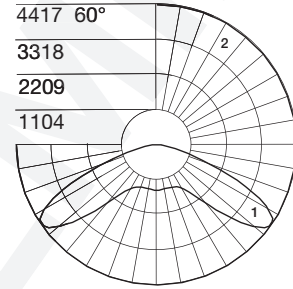
100W DISTRIBUTION OF LUMINOUS INTENSITY MODELS

Polar Candela Distributions: Vertical Plane (1) and Horizontal Cone (2) through maximum candela

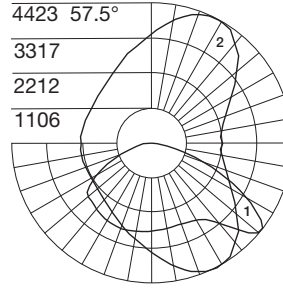
100W 50-5-C Flat Lens



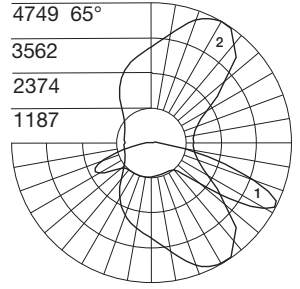
100W 50-5-D Dome Lens



100W 50-3-C Flat Lens



100W 50-3-D Dome Lens



Isofootcandle Lines of Horizontal Illuminance. 25ft Mounting Height

