

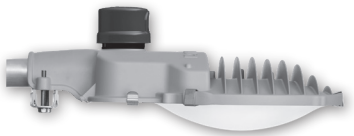
# EVLUMA AREAMAX™

LED STREET, AREA AND SECURITY LIGHTING  
REPLACES HID LUMINAIRES 100-200W

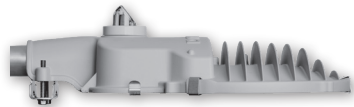
**AMAX 30**  
**AMAX 40**  
**AMAX 55**  
**AMAX 70**

## DESCRIPTION

The AreaMax LED luminaire for street and area lighting is a robust, utility-grade luminaire designed to last for years. Easy to install, the AreaMax saves energy and maintenance time. Perfect for residential street lighting, parking lots, or rural security applications requiring either full cutoff, or maximal visibility with a diffuse, low-glare light. AreaMax ship with Photocontrol Failsafe™ built-in and the option to activate ConnectLED™ features with the purchase of the Evluma custom Bluetooth application.



reuse existing photocontrol with S3 option (dome lens shown)



Evluma integrated photocontrol with P option (flat lens shown)



### CERTIFICATION DATA

UL 1598. MET Labs  
IP66. IEC 60598-1  
ASTM D2247-68  
FM 4473  
EPA under 0.5 sq ft

### ENERGY DATA

PF >99% at 120 VAC  
THD <10% at 120 VAC  
PF >91% at 277 VAC  
THD <20% at 277 VAC  
<1/2W off-state power  
Driver Lifetime >100,000 hrs  
-40°C Min / 50°C Max AM Temp

### SHIPPING DATA

Pallet Qty:  
56 units, 600 lbs

## Construction & Finish

Cast aluminum housing with gray powder coat. Hinged access panel is galvanized steel with spring clips to allow for easy open and close. Color by custom order.

## Optical (lens)

Textured glass and a white, optical-grade reflective film liner combine to create a bright, diffuse light.

## Electrical

Evluma proprietary Class II driver. Dimmable. Patented. 90-277 VAC 50/60 Hz high capability surge protection for 20kV/10kA per IEEE/ANSI C62.41.2 - 2002. Location Category C-High.

## Thermal Management

LED life is ensured by thermal management protection circuitry that controls current levels to the LEDs based on temperature. Critical components were selected for their minimal thermal resistance then paired with a custom light engine and casting design to maximize cooling.

## Mounting

Stainless steel tenon clamp and stainless steel screws accept 2" (5.08 cm), or 1 1/4" (3.17 cm) diameter arm.

## Lumen Maintenance

L70 (10,000) >55,000  
L90 (10,000) >55,000  
L70 (TM21) >100,000

LM at 10,000 hours >97%  
LM at 100,000 > 83%

LM 80 and ISTMT available at [www.evluma.com](http://www.evluma.com)  
TM 21 calculations available upon request.

## Warranty

Ten-year warranty.  
Visit [www.evluma.com/products/warranty/](http://www.evluma.com/products/warranty/)

# EVLUMA AREAMAX™

## ORDERING INFORMATION

SAMPLE NUMBER: AX-40-50-5-D-S7-CST-6

PRODUCT FAMILY	WATTS	CCT	DISTRIBUTION TYPE	LENS (options)	PHOTOCONTROL SOCKET (options)	ENVIRONMENTAL PACKAGE (options)	LEADS (options)
AX = AreaMax	30 = 30 watts 40 = 40 watts 55 = 55 watts 70 = 70 watts	27 = 2700K 30 = 3000K 40 = 4000K 50 = 5000K	5 = type V 3 = type III	D = dome C = cutoff	P = integrated S3 = 3 pin socket S7 = 7 pin socket	STD = std outdoor CST = coastal	6 = 66" 10 = 10" 20 = 20" N = none

### 30W PERFORMANCE

recommended to replace 70-100W HID  
CRI for 2700K = 80, all others >70

Code	Lumens	LM/W	BUG
50 5 (C)	4500	151	B2-U0-G1
50 5 (D)	4500	153	B2-U2-G1
40 5 (C)	4400	149	B2-U0-G1
40 5 (D)	4500	151	B2-U2-G1
30 5 (C)	4300	145	B2-U0-G1
30 5 (D)	4400	147	B2-U2-G1
27 5 (C)	3600	123	B2-U0-G1
27 5 (D)	3700	126	B2-U2-G1
50 3 (C)	4600	154	B2-U0-G1
50 3 (D)	4600	156	B2-U2-G2
40 3 (C)	4500	152	B2-U0-G1
40 3 (D)	4600	154	B2-U2-G2
30 3 (C)	4400	148	B2-U0-G1
30 3 (D)	4500	150	B2-U2-G2
27 3 (C)	3800	127	B1-U0-G2
27 3 (D)	3800	129	B1-U2-G1

### 40W PERFORMANCE

recommended to replace 100-150W HID  
CRI for 2700K = 80, all others >70

Code	Lumens	LM/W	BUG
50 5 (C)	5900	148	B2-U0-G1
50 5 (D)	6000	150	B3-U2-G1
40 5 (C)	5800	147	B2-U0-G1
40 5 (D)	5900	149	B3-U2-G1
30 5 (C)	5600	142	B2-U0-G1
30 5 (D)	5700	144	B3-U2-G1
27 5 (C)	4800	122	B2-U0-G1
27 5 (D)	5000	125	B2-U2-G1
50 3 (C)	6000	151	B2-U0-G2
50 3 (D)	6100	153	B2-U2-G2
40 3 (C)	6000	150	B2-U0-G2
40 3 (D)	6000	152	B2-U2-G2
30 3 (C)	5800	145	B2-U0-G2
30 3 (D)	5800	147	B2-U2-G2
27 3 (C)	5000	126	B2-U0-G1
27 3 (D)	5100	128	B2-U2-G2

### 55W PERFORMANCE

recommended to replace 100-175W HID  
CRI for 2700K = 80, all others >70

Code	Lumens	LM/W	BUG
50 5 (C)	7700	141	B3-U0-G1
50 5 (D)	7800	143	B3-U2-G1
40 5 (C)	7700	140	B3-U0-G1
40 5 (D)	7800	142	B3-U2-G1
30 5 (C)	7400	136	B3-U0-G1
30 5 (D)	7500	137	B3-U2-G1
27 5 (C)	6300	116	B2-U0-G1
27 5 (D)	6500	119	B3-U2-G1
50 3 (C)	7900	144	B2-U0-G2
50 3 (D)	8000	146	B2-U2-G2
40 3 (C)	7800	143	B2-U0-G2
40 3 (D)	7900	145	B2-U2-G2
30 3 (C)	7500	138	B2-U0-G2
30 3 (D)	7700	140	B2-U2-G2
27 3 (C)	6600	120	B2-U0-G2
27 3 (D)	6700	122	B2-U2-G2

### 70W PERFORMANCE

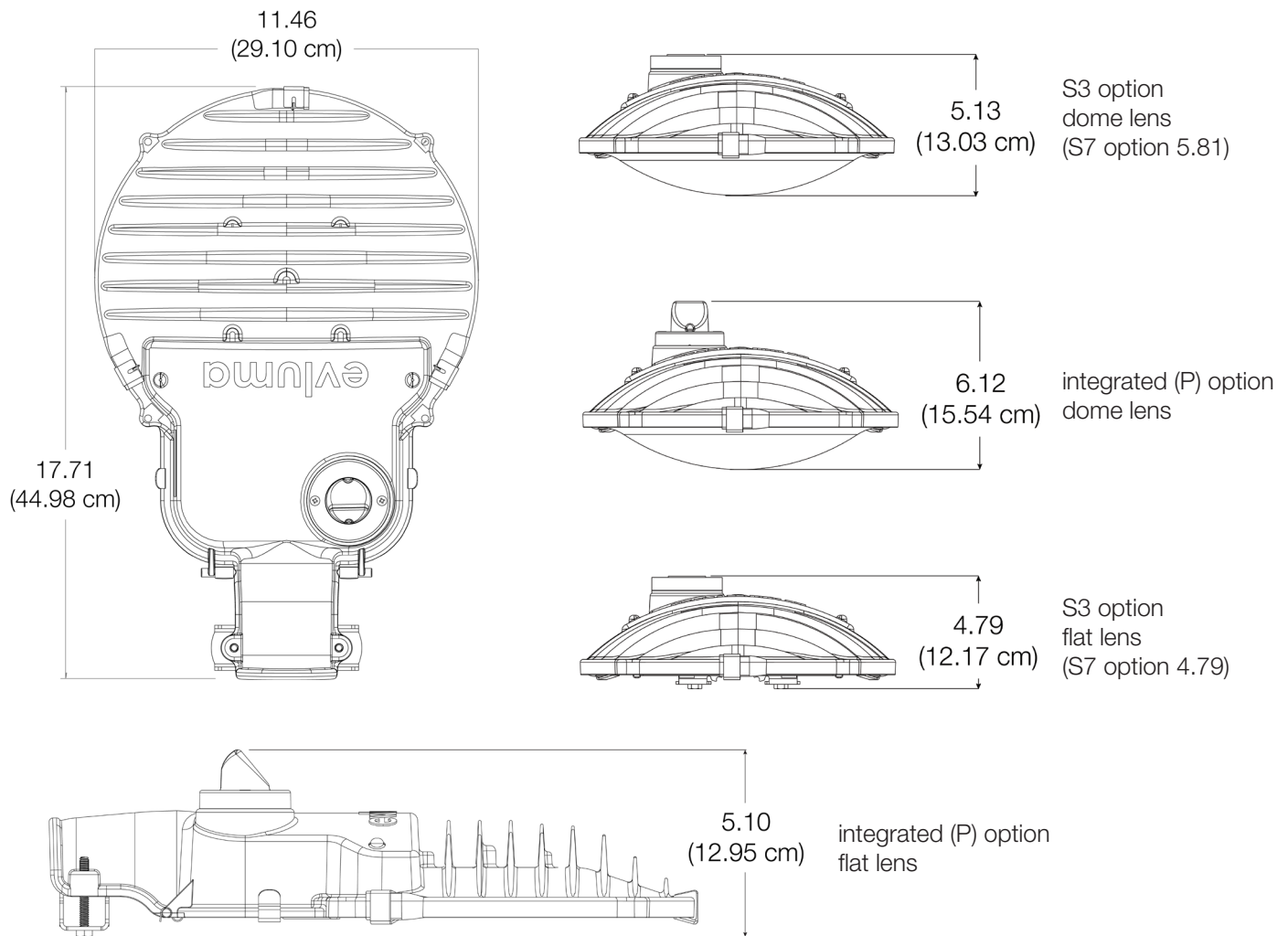
recommended to replace 100-200W HID  
CRI for 2700K = 80, all others >70

Code	Lumens	LM/W	BUG
50 5 (C)	9300	134	B3-U0-G1
50 5 (D)	9500	136	B3-U2-G2
40 5 (C)	9300	133	B3-U0-G1
40 5 (D)	9400	135	B3-U2-G2
30 5 (C)	9000	129	B3-U0-G1
30 5 (D)	9100	131	B3-U2-G2
27 5 (C)	7700	111	B3-U0-G1
27 5 (D)	7900	113	B3-U2-G1
50 3 (C)	9500	137	B2-U0-G2
50 3 (D)	9700	139	B3-U3-G3
40 3 (C)	9500	136	B2-U0-G2
40 3 (D)	9600	138	B3-U3-G3
30 3 (C)	9200	132	B2-U0-G2
30 3 (D)	9300	134	B3-U3-G3
27 3 (C)	7900	113	B2-U0-G2
27 3 (D)	8000	115	B2-U2-G2

Nominal lumen values reported.  
Normal tolerance ± 10%.  
Individual fixtures may vary with LED  
bin variance and ambient temperatures.

# EVLUMA AREAMAX™

## DIMENSIONS (inches)



### Accessories

**AX-LTS4** Unfinished aluminum light trespass shield (order separately)

### Coastal Environmental Package Option

Corrosive coastal environments have unique requirements. A housing made from a low copper content, cast aluminum alloy plus an aluminum access panel, a stainless steel tenon clamp and all stainless steel fasteners guarantee longevity in harsh, wet environments. Required for applications 2000 ft. from a salt water body.

Components	Standard	Coastal
<b>Housing</b>	cast aluminum alloy	cast aluminum alloy (low copper content)
<b>Coating</b>	polyester powder coat	polyester powder coat
<b>Access Panel</b>	galvanized steel	aluminum
<b>Tenon Clamp</b>	stainless steel	stainless steel
<b>Bolts</b>	stainless steel	stainless steel

Copyright © 2019 Express Imaging Systems, LLC. Evluma, AreaMax, ConnectLED, and Photocontrol Failsafe are trademarks of Express Imaging Systems, LLC. All rights reserved. For informational purpose only. MET labs logo is a registered trademark of MET labs.

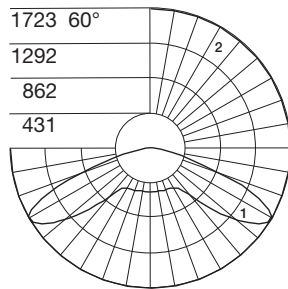
# EVLUMA AREAMAX™

## SAMPLE DISTRIBUTIONS OF LUMINOUS INTENSITY

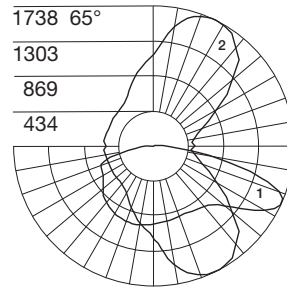
For complete photometrics on all wattages and CCT, please visit our website.

### AMAX 30 TYPE V TYPE III

Polar Candela Distributions: Vertical Plane (1) and Horizontal Cone (2) through maximum candela

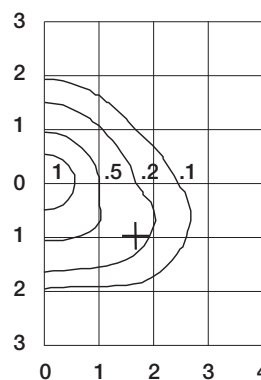
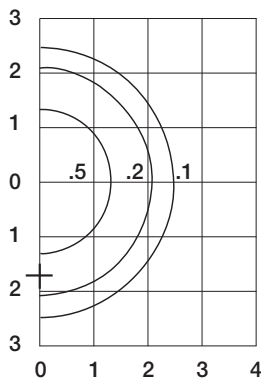


30W 50 5-D  
Dome Lens  
153 lm/W



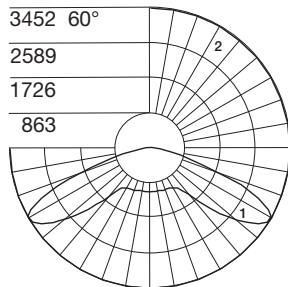
30W 50 3-D  
Dome Lens  
156 lm/W

Isofootcandle Lines of Horizontal Illuminance: 25' mounting height (+) Max Candela Point

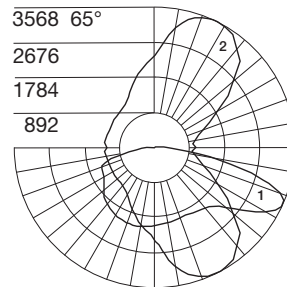


### AMAX 70 TYPE V TYPE III

Polar Candela Distributions: Vertical Plane (1) and Horizontal Cone (2) through maximum candela



70W 50 5-D  
Dome Lens  
136 lm/W



70W 50 3-D  
Dome Lens  
139 lm/W

Isofootcandle Lines of Horizontal Illuminance: 25' mounting height (+) Max Candela Point

