

Brawn, Brains & Beauty

Streetlights, Redefined

- + Custom glare and light trespass control knocks complaints out cold
- + Unmatched intelligence eliminates truck-rolls
- + Sleek, modern design does the job beautifully



RX1 | RX2 | RX3



Performance meets precision

Meet Evluma's new family of cobrahead lights, built on 25+ years of uncompromising LED solutions and thermal management expertise.

RoadMax is a sleek, full-featured, utility-grade luminaire designed to meet the needs of today's utilities and today's drivers. Revolutionary optical design delivers superior low-glare performance and light trespass control – without sacrificing pole spacing – because essential roads deserve exceptional light.



Applications: Flexibility, from Local to Major

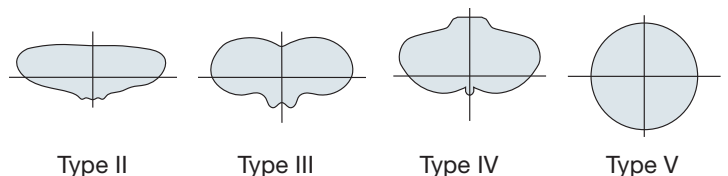
RoadMax was designed to replace HID Cobraheads on multiple roadway types and across diverse applications. RoadMax offers a wide range of configurations, as well as field adjustable settings and field installable secondary optics, delivering tremendous flexibility along with Evluma's unmatched reliability.

Typical Applications

Utilities	Campuses	Auto Dealerships
Municipal Streets	Military Bases	Parking Lots
Public Roadways	Industrial Parks	And more!

Light Distribution & CCT

Evluma has always prioritized light quality, and RoadMax brings our tradition of low-glare, crisp colors, and uncompromised performance to the roadway market. Our high-performance Type II, Type III, Type IV and Type V luminaires offer color temperature options from 2700-5000K. All configurations are Zero Uplight (U0 BUG) for Dark Sky compliance. The combination of aesthetically pleasing light, low glare, and uniform distribution elevates the standard for roadway performance.



A solution and a size to meet every challenge

30-300W LED to replace 70-400W HID



RX3



RX3 with
Glare Control



RX2



RX2 with
Glare Control



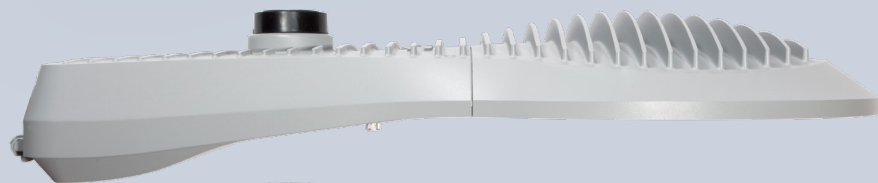
RX1



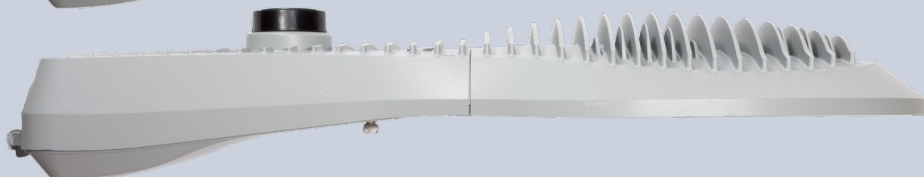
RX1 with
Glare Control



RX1
30-100W
2,840 - 13,000 lumens



RX2
70-220W
7,920 - 28,900 lumens



RX3
120-300W
13,860 - 42,340 lumens

images are scaled in proportion

Photocontrol Failsafe

Never roll another truck for a failed photocontrol.

Photocontrols can typically fail one or more times over the life of an LED luminaire, placing a significant demand on maintenance crews with every trip to the pole. Photocontrol Failsafe is an optional feature on RoadMax that can eliminate the ongoing maintenance costs of photocontrol replacements and the added energy costs and annoyance associated with a dayburner. Whether you've installed a 3-pin or a 7-pin photocontrol, or ordered RoadMax with Evluma's integrated photocontrol, take a potential break in the chain of reliability and make it a non-issue with Photocontrol Failsafe.

Light Trespass Shields & Optional Dimming

Tackle Discomfort Glare and Spill Light

Reducing Disability Glare is priority one when it comes to eliminating measurable glare on the roadway. Reducing Discomfort Glare, which can be more subjective, and curtailing the light trespass and spill light that contributes to it, benefits pedestrians, residents and even wildlife. At 30w, 2700K and with the secondary lens the RX1 delivers a dimmable 2,840 lumens - an ideal building-block for creating a neighborhood ambiance.

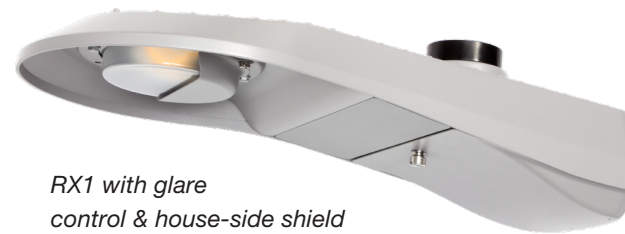
RoadMax is offered with a range of compact, field-installable trespass shields, enabling utilities to eliminate light trespass in any application. We also offer full dimming control via an in-field wattage selector (FAO) or via ConnectLED.



ConnectLED

Unlock additional savings with ConnectLED™. This app for Apple or Android devices communicates wirelessly via BLE (Bluetooth Low Energy) technology to:

- Connect/Disconnect the fixture from service
- Set maximum brightness
- Set scheduled dimming
- Monitor status, and more!

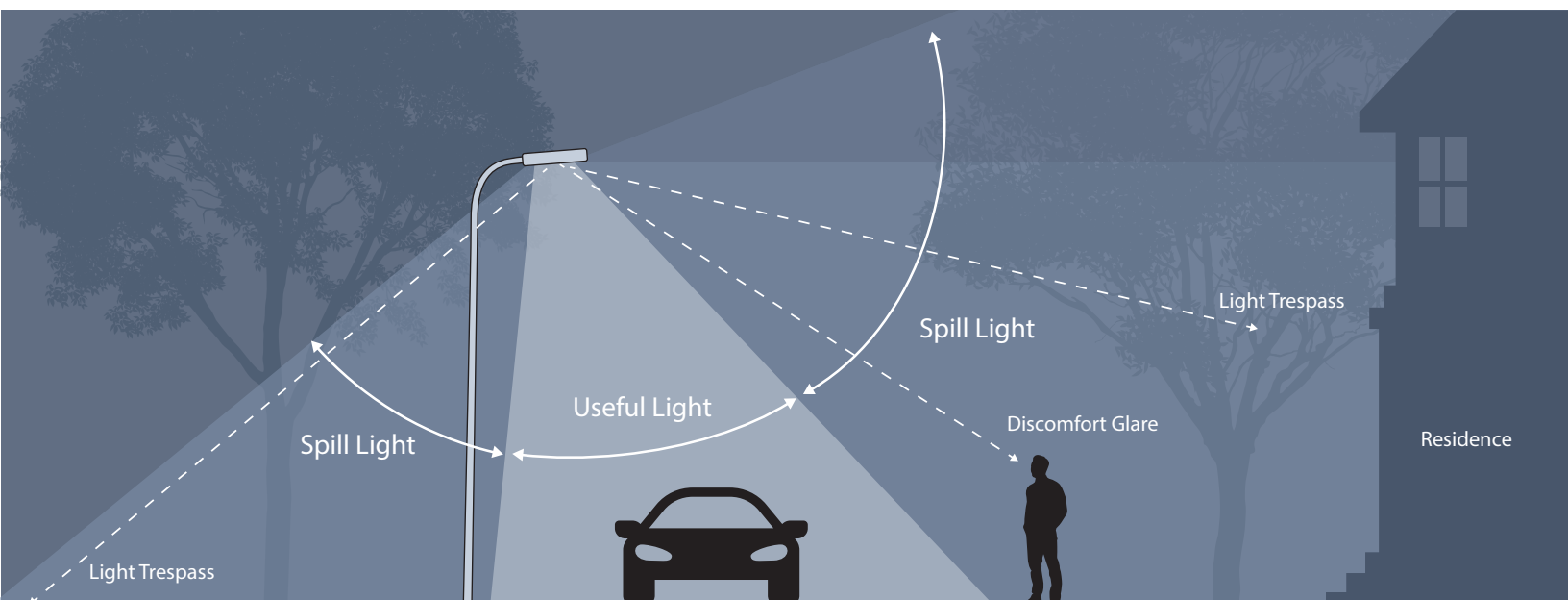


RX1 with glare control & house-side shield



RX1 with glare control & front-side shield

Light Trespass, also known as Spill Light, is any light that spills outside of the intended lighting area. Spill Light is typically emitted at a higher angle than Useful Light and “trespasses” onto areas where less light is preferred.



Commanding Roadway Performance PLUS Effective Glare and Light Trespass Control

Recognizing that glare is a significant challenge in the roadway environment, Evluma set out to design a luminaire that delivers industry-leading glare control without compromising performance.

Precision Primary Optics & Glare-reducing Secondary Optics

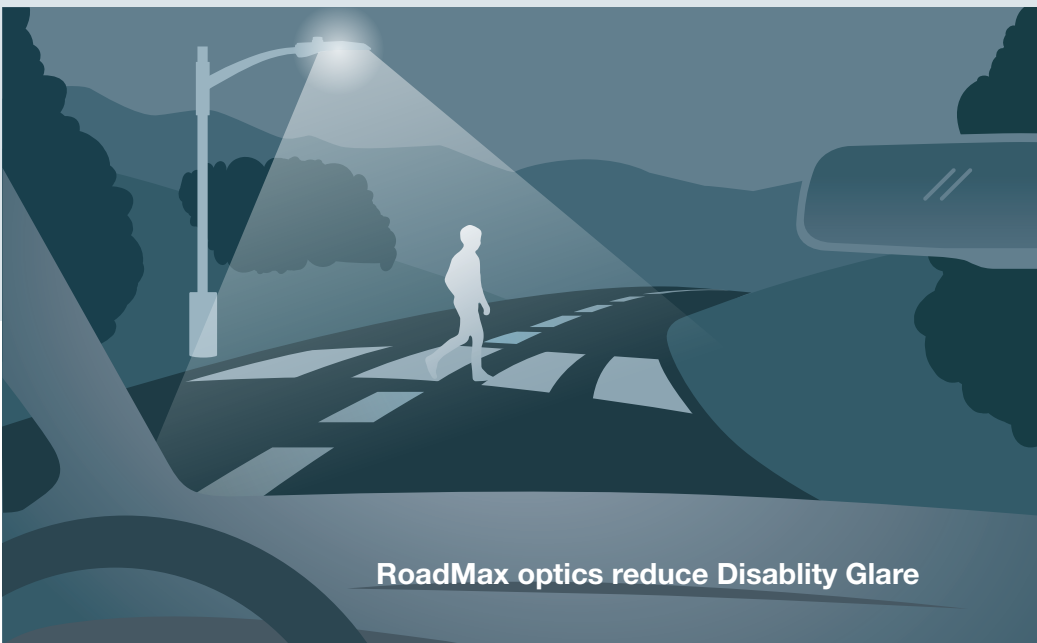
RoadMax's revolutionary optical design makes nighttime roads more pleasant for drivers and residents. The proprietary glass optics for Type II, III, IV and V are designed to deliver crisp, precise, evenly distributed light. We also offer a compact, field-installable secondary lens to further diffuse light and reduce glare while maintaining outstanding roadway performance.



Disability Glare impacts visual performance

Disability Glare Control & RP-8 Performance

Disability Glare (aka Blinding Glare) is glare that reduces visual performance and visibility – the last thing you want on the road. A light's Veiling Luminance Ratio indicates its ability to control Disability Glare.



RoadMax optics reduce Disability Glare

RoadMax provides superior roadway performance relative to competition while meeting all RP-8 metrics for Uniformity and Veiling Luminance Ratio.

Construction & Finish

RX2 shown

Evluma borosilicate
primary lens

Cast aluminum housing
with exceptional thermal
management and low EPA

Rotatable 3 pin,
7 pin socket
options, or
integrated P

RX1:
enclosed 2-bolt
mounting bracket

RX2 & RX3:
enclosed 4-bolt
mounting bracket

Tool-less
access panel

Color & Finish

RAL TGIC free,
polyester powder-coat

Gray

Black

Bronze

available for all models of RX

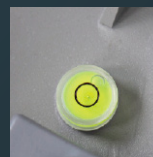
Optional diffused secondary lens
for glare control available for all
models

Controls

- 3 pin, 7 pin, integrated photocontrol P
- 3 pin + Photocontrol Failsafe, ConnectLED
- 7 pin + Photocontrol Failsafe, ConnectLED
- Evluma's proprietary integrated photocontrol P + Photocontrol Failsafe, ConnectLED



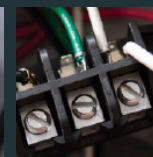
Integrated
photocontrol P



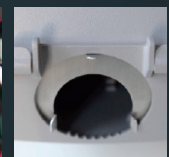
Bubble level



Field Adjustable
Output (FAO)



Easy-access
terminal block



Wildlife guard



Family Overview with Features & Options

Please see datasheets for technical data for each model

FAMILY ID	CCT	TYPE	LENS	PCR/ FAILSAFE	DRIVER AC VOLTAGE	SURGE (matches AC voltage)	FEATURES & OPTIONS
RX1 RoadMax small 30-100W 2,840 - 13,000 lumens	2,700 3,000 4,000	T2 T3 T4	diffused secondary lens for glare control	3 pin pcr 7 pin pcr (0-10V) Evluma Integrated PC	120-277VAC 277-480VAC*	Surge 20kV/10kA SPD	FAO (field adjustable output) NEMA label shorting cap long life NEMA photocell (matches AC voltage)
RX2 RoadMax medium, 70-220W 7,920 - 28,900 lumens	5,000	T5		3 pin + Failsafe/CLED 7 pin + Failsafe/CLED Integrated PC + Failsafe/CLED			
RX3 RoadMax large, 120-300W 13,860 - 42,340 lumens							

* RX2 & RX3 only. Coming soon for RX1!

Evluma makes one thing: Utility-grade outdoor LED lighting solutions

From heat management, to light quality, to integrated controls, we've been solving the biggest challenges in LED for over 2 decades. We help cities, municipalities and utility providers evolve their lighting infrastructure to meet needs of tomorrow.

TP-0061 REV 05

Copyright © 2025 Express Imaging Systems, LLC. Evluma, RoadMax, ConnectLED, and Photocontrol Failsafe are trademarks of Express Imaging Systems, LLC. All rights reserved. Content is subject to change. For informational purpose only. MET labs logo is a registered trademark of MET labs.



3600 Lind Avenue SW Suite 140
Renton WA 98057
425-336-5800 www.evluma.com