

ConnectLED

Reference Guide

Android Tablet v2.3

evluma



Contents

Introduction	1
Site License	2
Upgrading v2.1 to v2.3	3
Android Tablet Overview & General Operation	3
To Turn on the Tablet...	3
Navigation Bar...	3
To Turn Off the Tablet...	4
To Initialize ConnectLED GPS	4
To Connect to a WiFi Source...	4
To Start Google Maps...	4
To Turn Off ConnectLED...	4
System Updates...	4
App Updates...	5
ConnectLED Operation Overview	5
Licenses and Security	5
User License Types...	5
License Renewals...	6
Encryption...	6
Functionality Overview	7
To Start ConnectLED...	7
Find Lamps	7
Faulicast™...	8
The Connection screen	8
The Config Screen - BASIC license	9
The Config Screen - ENTERPRISE & PROMO license	9
Lamp Owner...	9
Model...	9
Serial Number...	9
Software Version...	10
Lamp Operation Mode (OFF/ON)...	10

Connected? (Yes/No)...	11
Location...	11
Time Zone ...	11
Observe DST? (Yes/No)...	12
Dimming Schedule (None/Show)...	12
Dim-to-Off...	12
Remove All Dimming...	12
Utility Data 1 & Utility Data 2...	13
Saving Settings...	13

Miscellaneous Functions 13

Profile...	13
User Agreement ...	13
System Info ...	13
User Preferences...	13
Sign Out...	13

View Event History 14

Pause/Resume...	14
Filters...	14
Save/Send...	14
ConnectLED.csv...	15

Send to Evluma 15

Common Tasks 15

How to Connect to WiFi...	15
How to Disconnect AreaMax or OmniMax...	16
How to Connect AreaMax or OmniMax...	16
How to Set the Maximum Intensity ...	17
How to Set a Dimming Schedule...	17

Troubleshooting 18

For More Information 20

Introduction

ConnectLED™ is a software application that communicates with the Evluma AreaMax™ LED luminaire for street and area lighting, and the OmniMax™ Premium decorative luminaire retrofit via BLE (Bluetooth Low Energy). ConnectLED operates up to 100 feet from the luminaire. The app is available on Google Play.

The following functionality is available in Android Tablet v2.3:

- connect and disconnect the lamp from service
- view lamp status and set configuration parameters
- set up to 4 custom dimming schedules with individual brightness levels
- set overall maximum brightness
- dim-to-off setting
- create custom data fields.

ConnectLED reads FaultCast™ status transmissions from both the AreaMax and the OmniMax Premium and verifies Photocontrol Failsafe™ conditions. ConnectLED is also available for Windows 7, 8.1 and 10 laptops and for Apple iOS 8 or higher. Please contact Evluma for more information or see www.evluma.com.

Compatible Android Tablets

V2.3 is compatible with most devices with a 7 inch or larger screen running Android OS version 4.4(KitKat) and above, including models by Asus, Lenovo, Nextbook, Sony, Panasonic, Toshiba and the Samsung Galaxy Tab series. Evluma has tested the following devices and can recommend them for purchase:

Samsung Galaxy Tab S2 (8")
Asus ZenPad (7").

Evluma lamps use a Bluetooth low energy profile. Not all tablets are guaranteed to be configured to work with all Bluetooth profiles. Tablets provided by Evluma during the 2016 v2.1 release are compatible with v2.3. Uninstall any earlier version of ConnectLED prior to installing v2.3. A tablet is not included with any release after v2.1. ConnectLED Android is not compatible with Android phones.

Compatible Products

ConnectLED works with any Evluma lighting product that is Bluetooth enabled, such as the OmniMax Premium. The OmniMax Standard is not Bluetooth enabled and will not respond to ConnectLED.

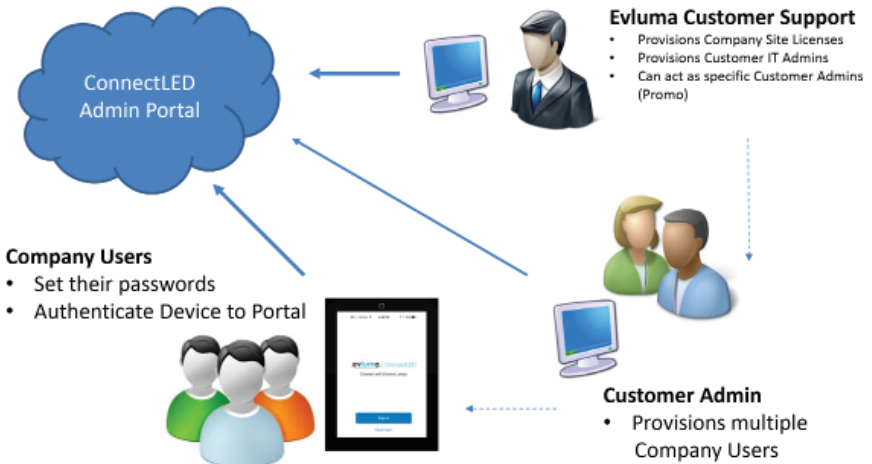
ConnectLED works with all AreaMax models. ConnectLED Android is only able to read, and not write to, AreaMax with firmware A07 (01/2014) and earlier. ConnectLED Windows writes to these legacy lamps.

Site License

ConnectLED Android, starting with v2.2 is offered as a single Site license under which multiple Users are provisioned. All Users are provisioned and managed through the ConnectLED Admin Portal (CAP) by the Company IT Admin. The Company IT Admin is assigned when a license is ordered from Evluma.

CAP portal link: <https://connectled.evluma.com/#!/login>

Overview



Overview of ConnectLED Licence Management.

The number of BASIC and ENTERPRISE User types is indicated at the time the Site license is ordered from Evluma. The Company IT Admin then assigns the pre-ordered license types to the Users in the ConnectLED portal. To set their password, Users follow instructions sent in an email from "NoReply@evluma.com. Once the password is set, Users then log on through the app. For more details see the ConnectLED Customer Admin Guide on evluma.com/connectled.

Upgrading v2.1 to v2.3

Uninstall ConnectLED from your tablet prior to installing the new version from the Google Play Store.

Companies licensed to use ConnectLED Android v2.1 can upgrade to v2.3 by contacting Evluma Customer Support. With v2.1 Evluma provided a factory-provisioned tablet with ConnectLED installed and the license was associated with the specific Android device. Android v2.3 is available on the Google Play Store and may be downloaded and installed on any Android tablet with a 7 inch or larger screen. The license structure has changed from individual, device-specific licensing to a Site license managed by your IT Admin.

If you installed v2.2 through Google Play the app is automatically updated to v2.3 upon connecting to the Internet unless updates are disabled on your tablet.

Android Tablet Overview & General Operation

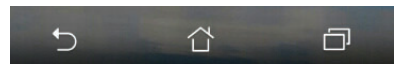
ConnectLED Android v2.3 works on Android tablets with a 7 inch or larger screen. Charge the tablet and connect to the Internet prior to use. See the user guide from the tablet manufacturer for specific instructions.

To Turn on the Tablet

Press and release the smaller On/Off button on the right-hand side of the tablet. When you first power the tablet on, the Lock screen should appear. Swipe the screen to the left to unlock it, revealing the Home screen.

Navigation Bar

Three buttons appear at the bottom of the screen as shown. They are Back, Home and Active Program List.



The Navigation Bar

The center button is Home. Press to return to the Home screen. The Home screen toolbar contains the featured programs installed on the device. Touching an icon will open that program. Above the Home button is a small array of six boxes. Touch to view all the applications available on the device.

The Back button is on the left. Press to return to the previous screen when inside an operation. Pressing Back may be required to end a current operation.

The Active Program List button is on the right. This is a list of current programs being used and allows a quick way to switch between applications. The Active Program List also provides a means of terminating a program if it hangs or becomes unresponsive. Swiping an application to the left will close it.

To Turn Off the Tablet

To power the device off, press and hold the On/Off button. Follow prompt.

To Initialize ConnectLED GPS - WiFi/Google Maps

Initialize ConnectLED over WiFi and run Google Maps before you use the tablet. If operating a new tablet, or an Evluma factory provisioned tablet, verify that the tablet location has been updated from the factory default and reflects your true location.

Setting luminaire location with ConnectLED is optional. The factory settings for latitude and longitude for the luminaire are the baseline for Photocontrol Failsafe calibration. After three weeks at the installed location Photocontrol Failsafe has received enough dusk-till-dawn data to make in situ refinements. See also, the Config screen, Location. For more information on Photocontrol Failsafe and the AreaMax see TB20121214.3, or for OmniMax see TB20180604.1.

Recommended Practice: Initialize ConnectLED GPS prior to heading out in the field as there may not be an accessible WiFi hotspot at the pole. If there is no WiFi hotspot at the pole and you are attempting to set the location of the luminaire, ConnectLED will use the last known GPS location of the tablet when installing a lamp. Keep the tablet charged.

To Connect to a WiFi Source

Touch the Settings icon to open the Settings screen. At the top of the Settings screen touch the WiFi toggle to turn it to the On position. Select the account you wish to use and follow the password prompt. Once you have successfully connected to a WiFi source, touch the Home button to return to the Home screen. See How to Connect to WiFi on your Android Tablet.

To Start Google Maps

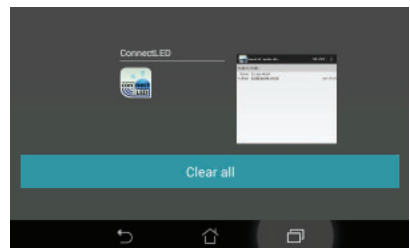
Touch the Google Maps icon to open Google Maps. You will see a map with your current location indicated. You have successfully initialized ConnectLED GPS and enabled it to retrieve the current GPS location of tablet.

To Turn Off ConnectLED

To turn off ConnectLED, touch the Active Programs button and swipe the ConnectLED application to the right. You may also press the Clear All button.

System Updates

Android will periodically release updates



Open Applications List. Swipe right to clear.

for your tablet. These updates are unrelated to ConnectLED, but are part of the standard operation of the tablet. The tablet will receive an alert message letting you know an update is available. Updates require WiFi and can take time to download and install.

Recommended Practice: Periodically check for and install updates in advance of operation to avoid connectivity delays. You can manually check for updates. In Settings, choose About. If there is a new update available you may choose to Cancel, Postpone or Install. Installs typically take 10 minutes.

App Updates

Should there be any updates issued for ConnectLED v2.3 they will be delivered to your device directly through the Play Store. You will receive an alert message that an update is available or that the app was updated. Evluma may issue updates to add new features or improve functionality.

ConnectLED Operation Overview

FIND LAMPS is the main screen. It displays all lamps within range of the tablet. Select a lamp to initiate a secure connection to the lamp. Once connected, you may view or change the operating configuration of the lamp in the Config screen.

The ConnectLED logo and screen name appears on the left of the action bar. In the example provided, the screen name is Config. Touch the logo to return to the FIND LAMPS screen at any time.



The Action Bar

The 3 vertical squares to the right mean “more actions” and provide additional commands if available. See Miscellaneous Functions for more information.

Licenses and Security

Customers are issued a unique Site license for a registered number of BASIC or ENTERPRISE User types. The Site license is managed by the Customer IT Admin. The User license type controls the functionality available within ConnectLED.

When ConnectLED first connects to an Evluma lamp the unique customer Site license assignment takes ownership of an Evluma lamp, becoming the Lamp Owner, regardless of the User type.

User License Types

There are three types of User licenses available for ConnectLED: BASIC, ENTERPRISE and PROMO. The BASIC license has restricted functionality; ENTERPRISE has full functionality. A BASIC license allows you to Connect

and Disconnect an unlimited number of Evluma lamps from service, send event history and system information to Evluma with an RMA, and view lamp information. Additionally, a User with an ENTERPRISE license type may set Dimming and Maximum Brightness.

A PROMO license provides full functionality to a restricted number of lamps. Evluma is the IT Admin for all PROMO licenses as a PROMO license is limited to the individual performing the evaluation and may be installed on a personal device. Once a PROMO license is upgraded to a Site license, the Company IT Admin manages the license, User types and all devices.

License Renewals

Your license may have a time limit. ConnectLED will notify you when your license is about to expire. All PROMO licenses have an expiration period as indicated when the application starts. Should you wish to extend your license, please contact Evluma Customer Support.

License Expiration Alerts

Upon your first log on to the tablet you will be notified of any pending license expiration. You will receive weekly and daily reminder messages only when the license has an expiration date. These messages are commonly seen if you have a PROMO license.

Weekly reminder messages if ≤ 60 days remaining.

Daily reminder messages if ≤ 1 week remaining.

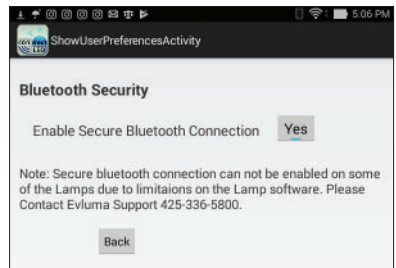
1 Day Extension Message

If your license should expire, you will automatically receive an optional 1-day extension. This one time extension gives you the option to contact Evluma when you return to the office without interrupting the current project, or workday.

Encryption

Encryption is optional; by default it is OFF. Enable Bluetooth Secure Connection Under User Preferences. See also Miscellaneous Functions.

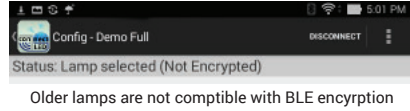
Android ConnectLED v2.3 is the first Android version to support Bluetooth over-the-air encryption protocols utilizing AES-128. Bluetooth encryption is available but only compatible with future AreaMax models due to restrictions inherent to



Lamp Status message when connected lamp is incompatible with encryption settings.

Android and the in-lamp software. ConnectLED Windows offers encrypted communication to all AreaMax models starting with Rev A06 (2013). Please contact Customer Service to obtain a Windows license. Encryption setting compatible with OmniMax FW05 (5/2018) forward.

If encryption cannot be enabled on the lamp you have connected to, the Lamp Status will read Lamp selected (Not Encrypted).



Functionality Overview

Start the application, log on and find lamps. Currently, all Android devices are WiFi only. You will need to be connected to the Internet the first time you log on to ConnectLED. Logon credentials are permanently cached as an internet connection may not be available at the pole. However, Users must authenticate against cached credentials.

App goes out to server for authentication if network is available during logon operation.

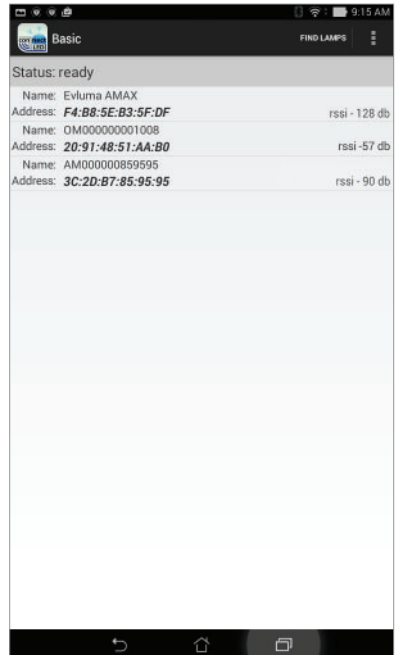
To Start ConnectLED

Touch the ConnectLED icon on the Home screen to start the application. Log on.

Find Lamps

After you log on, the first screen will be FIND LAMPS. ConnectLED will automatically search for lamps. Status will be: Finding devices. Any AreaMax or OmniMax found within range will be displayed. Status will change to Status: ready when the search has finished.

If no lamp is nearby and powered up, the screen will be blank. Move the tablet to a location near a powered lamp. Touch FIND LAMPS in the upper right action bar to initiate a search of nearby lamps. Any lamps within range will appear with their unique Bluetooth address and RSSI value (signal strength). If multiple lamps are detected, the larger the RSSI number the closer the lamp (-60db is closer than -80db).



The FIND LAMPS screen

Note: Name: Evluma AMAX will appear for AreaMax lamps with an internal version earlier than FW14.

Faultcast™

The RSSI message can also be replaced by an error or status message from the lamp.

<disconnected> means that the lamp you have found is in a disconnected state. This is helpful if you are trying to troubleshoot a lamp during the daytime. <sensor failure> is the error message if the lamp misses 3 dawn to dusk events indicating that either no sensor is installed, or it has failed.



AreaMax with <disconnect> status message

Note: The OmniMax must be connected to power during the day if attempting to troubleshoot during the daytime. Depending on how your decorative street fixtures are switched on/off, power may not be continuous during the day.

Select one of the available lamps to initiate a connection. The selected lamp will blink 6 times to confirm connection.

Once the tablet connects to the selected lamp, the Config screen will be presented and the DISCONNECT/CONNECT command will appear on the action bar.

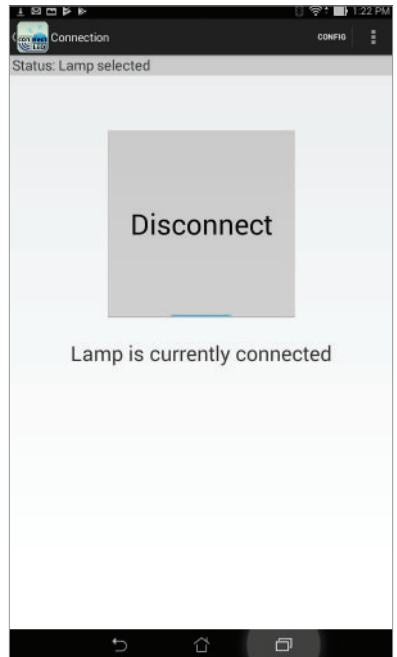
The Connection screen

Connect or Disconnect the lamp using the CONNECTION screen. This controls the service state of the lamp. Touch CONNECT or DISCONNECT in the action bar to open the CONNECTION screen.

A Connected lamp operates normally, turning on at dusk and off at dawn.

A Disconnected lamp remains off at all times.

If the lamp is currently in a Connected state, the DISCONNECT item will appear in the action bar, upper right. If the lamp is currently in a Disconnected state, the CONNECT item will appear.



The Connection screen

Press the large button in the center of the CONNECTION screen to initiate either a Connect or Disconnect command as displayed. Lamps will visibly respond to commands from ConnectLED in the following manner:

- Disconnect – lamp flashes 3 times plus 1 quick flash
- Connect – lamp will turn on. It will remain on at night, or turn off after 10 minutes during the day.

Caution: The AreaMax is still connected to a live power source even if it is in a Disconnected service state. The AreaMax continues to draw a small amount of power, between 1-5W, in the Disconnected state.

The Config Screen - BASIC license

The information displayed in this view cannot be edited if you have a BASIC license type and is for information purposes only. Dimming is not included in BASIC; however, the Dimming button is active, allowing you to view the option.

The Config Screen - ENTERPRISE & PROMO license

ENTERPRISE and PROMO license types may change the lamp's operational parameters using the Config screen. Select CONFIG from the action bar, upper right. Parameters are outlined below.

Lamp Owner

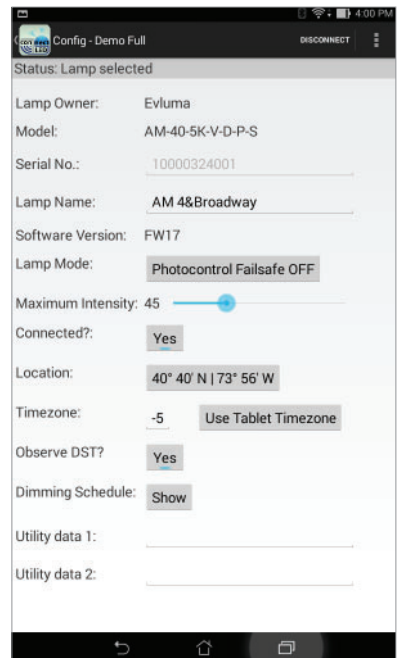
The Lamp Owner field displays the name of the ConnectLED Site licensee holder. ConnectLED writes the Lamp Owner to the Evluma lamp once a User has connected to it. Field is read only.

Model

ConnectLED works with both the AreaMax and the OmniMax. This field indicates the Evluma product model. Field is read only.

Serial Number

This is the serial number of the connected lamp: AreaMax, or OmniMax. Rev A12 AreaMax and later will populate this field with a unique serial number,



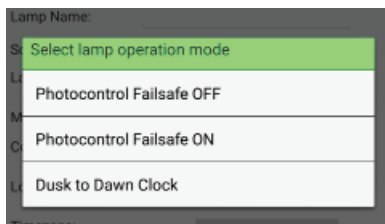
as will Rev A07 and earlier. Otherwise, the field is empty. Field is read only.

Software Version

This is the software version of the connected Evluma lamp.

Lamp Operation Mode (OFF/ON)

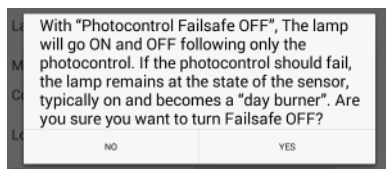
There are two primary operation modes: Photocontrol Failsafe ON, Photocontrol Failsafe OFF. If you are operating an OmniMax Premium with firmware FW07 (8/2018) and up, a third option will present: Dusk to Dawn Clock.



Set Lamp Operation Mode in the Config screen

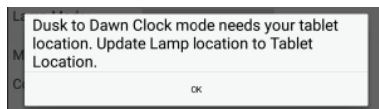
Photocontrol Failsafe™ is an Evluma proprietary feature in both the AreaMax and the OmniMax Premium lamp that monitors the state of the photocontrol and takes over operation if the photocontrol fails.

By default, Photocontrol Failsafe is ON. If you turn Photocontrol Failsafe OFF the lamp will follow the state of the photocontrol, regardless of its operational state. You will be asked to confirm your choice. For more information please see TB20121214.3, or TB20180604.1.



Photocontrol Failsafe OFF confirmation request

The Dusk to Dawn Clock mode is only available for the OmniMax Premium (FW07). A lamp operating with Dusk to Dawn Clock activated will follow the dusk-to-dawn schedule programed into the lamp. The exact time and location of the lamp must be set upon installation in the field for the Dusk to Dawn Clock mode to perform correctly. This mode requires power to the lamp for operation. If a photocontrol is installed and the photocontrol manages the power to the socket, the photocontrol and Dusk to Dawn Clock must be operating in concert (both in an ON state) to turn the OmniMax on. If the photocontrol fails, Dusk till Dawn Clock mode will operate only with a photocontrol that fails on.



In Dusk to Dawn Clock mode you must update lamp location using your tablet to establish the correct times for dusk and dawn.

Update lamp location to tablet location. See The Config Screen - ENTERPRISE & PROMO license, Location. Please consult with Evluma Customer Service prior to running an OmniMax in Dusk to Dawn Clock mode.

Maximum Intensity

Drag to reduce default brightness level (and corresponding power level). Typically the adjustment range is 100% to 20% with 20% being the lowest setting, however, the minimum value range may vary from 5%-65% based on the minimum intensity characteristic value of the AreaMax and is determined by the driver type. For assistance determining the minimum dimming value for your AreaMax please contact Customer Support.

If the Maximum Intensity is set, the light output of the lamp will never exceed this setting. This establishes the overall *maximum* brightness of the lamp. A dimming schedule may be created to further lower the lamp output, however, a return to 100% brightness in the dimming schedule will return the lamp to the % specified by the Maximum Intensity.

Connected? (Yes/No)

Change the default service state of the lamp. Press Yes to connect, or No to disconnect the lamp. See also the CONNECTION screen. Yes means the light will operate normally. No means the light will remain off at all times.

Location

Setting luminaire location is optional unless you are running the lamp in Dusk to Dawn Clock mode. The factory settings for latitude and longitude are the baseline for Photocontrol Failsafe calibration. After three weeks at the installed location, Photocontrol Failsafe has received enough dusk-till-dawn data to make in situ refinements.

Touch the Use Tablet Location Button to use the current location of the tablet to update the location of the lamp. This is an option if there is WiFi at the pole. Touch Cancel to return to the Config screen without saving your changes.

Touch Done to save your changes and return to the Config screen.



Select Location: Use Tablet Location

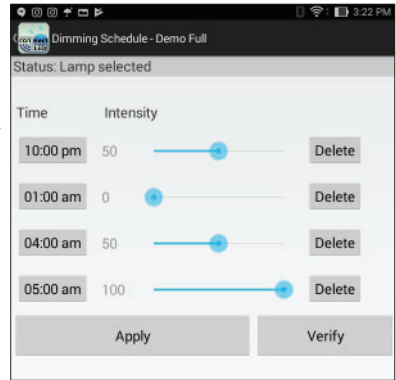
Time Zone

Touch Use Local Time zone to update the time zone. Updating the time zone is only necessary if the tablet has traveled outside the factory set time zone and the time zone was updated by Google Maps, or otherwise directed by Evluma

Technical Support. The time zone is used by the dimming schedule. If the time zone is incorrect, the dimming schedule may not perform accurately for the lamp's real location. See also, To Initialize ConnectLED GPS - WiFi/ Google Maps.

Observe DST? (Yes/No)

Press Yes to enable, or No to disable DST (Daylight Savings Time). Disabling DST may effect the dimming schedule.



The Dimming Schedule screen with Dim-to-Off

Dimming Schedule (None/Show)

Activate up to 4 separate time periods and brightness levels for the lamp to deliver. Pressing the None or Show button will open the Dimming Schedule screen.

If no dimming schedules have been set, the screen will be blank. Press the Add button to bring up a default time and intensity. Adjust appropriately. Press Add to add more time periods. The last entry must return the lamp to 100% ensuring that when the lamp turns on at sunset, it returns it to the Maximum Intensity set for the lamp.

Press Verify to test whether a valid set of schedules has been chosen.

Press Apply to write the schedule to the lamp.

Note: The dimming schedule brightness levels are relative to the lamp's full illumination capability. If the Maximum Intensity level is set, dimming settings remain a % of the lamp's full capability for all settings below the Maximum Intensity. The Maximum Intensity caps the light output. At no time will the lamp exceed the Maximum Intensity setting. Depending on the minimum intensity characteristic value of the lamp the minimum intensity can be between 5-65%. Press the back arrow at the bottom of the screen to return to the Config screen or the upper left of the action bar to return to FIND LAMPS.

Dim-to-Off

Android v2.3 supports Dim-to-Off programming. Dim-to-Off programming enables owners to shut off lights altogether at a designated time, or for a short time period. Previously, dimming was restricted to a 20% minimum. Now dimming can be set to 0% or 'off.' Dimming is restricted to 0%, or to the minimum intensity characteristic of the lamp (5%-65%). Dim-to-Off is not effected by the minimum intensity characteristic value given by the lamp. See also, Maximum Intensity.

Access dimming controls via the Config screen. Final setting must be returned to 100% before schedule will verify and save.

Remove All Dimming

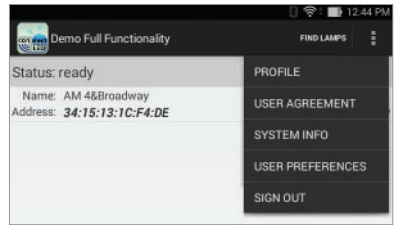
Access from the Config screen on the action bar via “more actions.” Touch this menu item to quickly reset and remove all dimming settings including the Dimming Schedule and the Maximum Intensity.

Utility Data 1 & Utility Data 2

Utility Data 1 & Utility Data 2 are editable fields that can be used to write important data to the lamp. Limit 32 characters. Tap the text field to open a keyboard. When you are finished typing, tap Done. Entry will save upon exiting the screen. This data will be visible in the ConnectLED.csv. See View Event History, ConnectLED.csv.

Saving Settings

Settings are written to the lamp firmware at execution and automatically saved when you exit ConnectLED, or disconnect from the lamp. ConnectLED Android disconnects from the lamp when the user returns to the FIND LAMPS screen. If a lamp is powered off while connected via Bluetooth, the changes made in that session are lost.



Miscellaneous Functions

Miscellaneous Functions

Additional functions are available from the FIND LAMPS screen. Touch the 3 vertical squares to the right on the action bar to open menu.

Note: To return to the FIND LAMPS screen at any time, touch the ConnectLED icon on the upper left.

Profile

Select Profile to display User Info and the Access Level of the User, including the limitations on lamp access, the customer ownership identifier and license duration.

User Agreement

Select User Agreement from the drop down menu to display the licensing terms. Tap OK to Close.

System Info

Touch to display the app version and the Android device data.

User Preferences

The option to Enable Encryption is found under User Preferences. See also License & Security, Encryption.

Sign Out

Typically, the Android device is Company owned and may be used by more than one User. As Users may have different User license types, it may be mandatory to log out at the end of a shift.

View Event History

Each lamp maintains an event history, a tool designed to assist the RMA process. This log can be retrieved using ConnectLED. Access from the Config screen action bar via “more actions.” This will display all of the past events that have occurred within the AreaMax or the OmniMax to which you are connected.

Pause/Resume

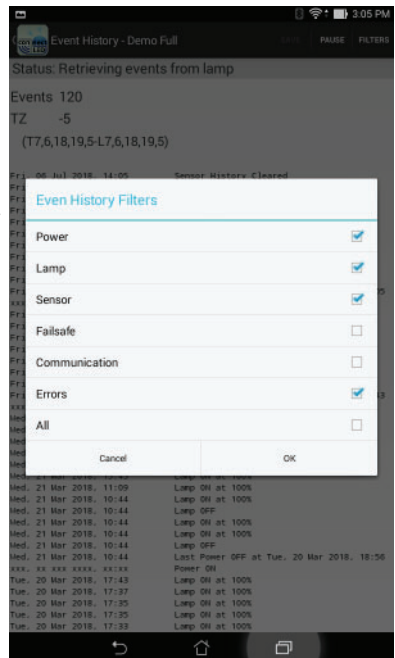
Retrieving all of the lamp events may take a moment or two depending on the number of events in the history of the lamp. Touch Pause/Resume at any time during retrieval to pause or resume the list of events. Once ConnectLED is Done retrieving events from lamp you may Save the event history and/or Send to Evluma. ConnectLED will prompt you for an RMA number prior to sending the event history to Evluma.

Filters

Android v2.3 has a number of optional filters for viewing the Event History in order to make finding a specific event easy. By default, Power, Lamp, Sensor and Error events are show in the log. Check, or uncheck your preferences and tap OK to apply a new set of filters.



Miscellaneous Functions



Miscellaneous Functions

Save/Send

The Event History will be saved as a text (.txt) file to *UniqueDeviceName*\Internal storage\Evluma. Connect the tablet to a PC using a USB cable to view this file. This event log file can be emailed to Evluma should you require troubleshooting assistance. An RMA number must accompany the event log. As part of lamp event history, app also attaches ConnectLED user account information (login information) identifying which User and Customer is reporting the issue.

ConnectLED.csv

The ConnectLED.csv file contains a record of all program parameters sent to each lamp to which you have connected, listed by mac address. A record is created whenever a parameter is changed. There may be multiple records for a lamp depending on the actions that have been taken. Connect the tablet to a PC using a USB cable to view this file.

Send to Evluma

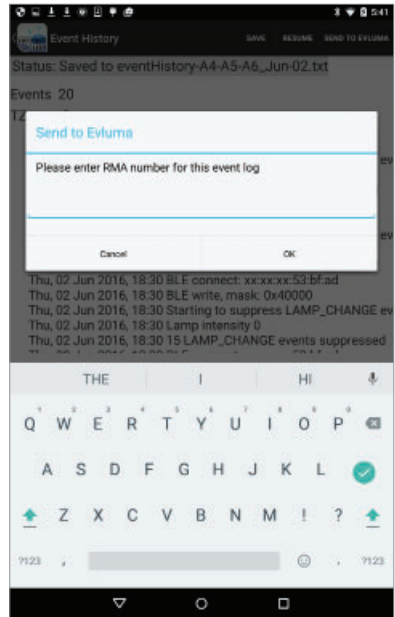
ConnectLED is designed to make communication with Evluma Technical Support and Service easy. You may use any method, or account, to email the event history from the tablet. An RMA (Return Material Authorization) number is required prior to sending an event history to Evluma.

Event History

The AreaMax event history is stored in a text (.txt) file that may be sent to Evluma for analysis if there are conditions to diagnose. This file is unique to the lamp to which you are currently connected. The event history should not be sent to Evluma unless an RMA number has been assigned specifically to the lamp. From the Event History screen, touch Save and then Send to Evluma to send the event history log to Evluma.

Common Tasks

The following section outlines the most common tasks performed in ConnectLED. Steps, functions, or settings may vary depending on the model of your tablet.



Enter an RMA to send an Event History.

How to Connect to WiFi on your Android Tablet

Connect to WiFi to use Google Play, receive software updates, send emails for RMA/event histories, or to set lamp location (optional). See also, To Initialize ConnectLED GPS - WiFi/Google Maps.

1. Touch the Settings icon to open the Settings screen.
2. Under “Wireless & Networks,” touch WiFi.
3. Touch the WiFi switch to turn it to the On position. You’ll see a list of saved and available networks.
4. Select the account you wish to use and follow the password prompt.
5. Once connected, your device will say “Connected” under the network name, and it will show up in your saved networks list. Your device will automatically connect when in range. Touch the Home button to return to the Home screen.

How to Disconnect an AreaMax or OmniMax

When connecting to an AreaMax or OmniMax for the first time, the lamp will be in a Connected state. By default, all Evluma lamps are in a Connected state and ready to install when they are shipped from the factory.

1. Tap the logo on the Home screen to launch ConnectLED. Log on.
2. ConnectLED will automatically search for lamps. Any AreaMax or OmniMax found within range will be displayed. If no lamp is found, move closer, or point the tablet in the direction of the lamp you wish to connect to and touch Find Lamps prompting ConnectLED to search again.
3. Select the lamp you wish to disconnect from service. A popup will appear as Connecting to: mac address if connecting to an AreaMax. If connecting to an OmniMax, the serial number will appear. The lamp will flash 3x.
4. Press the Disconnect button to disconnect the lamp from service. A warning message will pop up.
5. Press Disconnect to confirm that you wish to disconnect the lamp from service. The lamp will flash 3x. The Disconnect button will change to a Connect button to facilitate future re-connection.
6. Press the Return button or tap the logo to return to the FIND LAMPS screen.

How to Connect an AreaMax or OmniMax

You may wish to connect or re-connect an AreaMax or OmniMax Premium to service if it has previously been disconnected.

1. Tap the logo on the Home screen to launch ConnectLED. Log on.
2. ConnectLED will automatically search for lamps. Any lamp found within range will be displayed. If no lamp is found, move closer, or point the tablet in the direction of the lamp you wish to connect to and touch Find Lamps prompting ConnectLED to search again.
3. Select the lamp you wish to connect to service. A pop-up will appear as Connecting to: mac address if connecting to an AreaMax. If connecting to an OmniMax, the serial number will appear. The lamp will flash 3x.
4. Press the Connect button to connect the lamp to service. ConnectLED connects the lamp to service immediately, and the will light come on.

If it is daytime the light will come on for 10 minutes then turn off.

If it is nighttime the light will come on and stay on.

5. Press the Return button or tap the logo to return to the FIND LAMPS window.

How to Set the Maximum Intensity

For details on the Maximum Intensity setting see Config screen (ENTERPRISE and PROMO licenses only), Maximum Intensity.

1. View Lamp Configuration. Midway down the screen is a blue slider to set Maximum Intensity. By default, this is set to 100.
2. Drag the blue set point from right to left along the slider. The number to the left of the slider will change to reflect the new setting. Adjust to preference and leave. Setting automatically saves.
3. Press the return button or tap the logo to return to the FIND LAMPS screen.

How to Set a Dimming Schedule

For more details on the Dimming Schedule, see Config screen (ENTERPRISE and PROMO licenses only), Dimming Schedule. View Lamp Configuration. Towards the bottom of the screen you will see the button to Show the Dimming Schedule.

1. Press the Show button. The Dimming Schedule screen will open.
2. Press the Add button to activate the first entry. You may create up to 4 entries.

Note: The Dimming Schedule may not consist of a single entry. The last setting must return the lamp to 100%.

3. Tap the Time button to open a popup window where you may set the time for the first dimming period to begin.
4. Roll the wheels forward or backward to set hour, minute and AM or PM.
5. Tap Done when you are finished.
6. Slide the blue set point along the slider from right to left to set the dimming level for this first time period.
7. Repeat steps 3 through 7 to add two more dimming periods. The fourth and final setting must return the lamp to 100%.
8. Press the Verify button to verify that your dimming schedule is valid.
9. Tap Apply to apply the dimming schedule to the lamp.
10. Press the Return button or the Back button to return to the Config screen, or tap the logo to return to the FIND LAMPS window.

Troubleshooting

If you experience any trouble with the application, or the application freezes, try restarting the application. To turn off ConnectLED, touch the Active Programs List button and swipe the ConnectLED application to the right. You may also tap the Clear All button. Tap the ConnectLED logo on the Home screen to start ConnectLED again.

How to Upgrade your License

Please contact an Evluma Representative or Distributor to purchase a Site license once your PROMO license has expired. If you are a BASIC User type and wish to upgrade to ENTERPRISE please contact your Company IT Admin. If you are a Company IT Admin looking to increase the number of BASIC or ENTERPRISE User types under your Site license, please contact Evluma Customer Support.

User Authentication Alerts

There are three types of Authentication Alerts indicating that you are either unable to authenticate your logon because of a lack of internet connection, or an issue with your license.

“Sign in Failed. No internet connection. Please check your network connection and try again.”

“Sign in Failed. Your License expired. Please contact your ConnectLED admin.”

“Sign in Failed. Authentication failed. Please try again. If the problem persists, Please Contact Evluma Support 425-336-5800.”

Service Bulletin SB20170606.1

Hardware Errors in ConnectLED Related to Android Tablet Time Setting

Connecting to an AreaMax with ConnectLED Android Tablet v2.1-v2.3 updates the time and location of the AreaMax with the time of the tablet. If the tablet time is off by too great a degree, the AreaMax will immediately determine it cannot correct itself and return either a Hardware Error Related to Time Setting (HW Error), a Clock Drift Error, or both. Consult SB20170606.1 for more information.

Service Bulletin SB20160519.1

AreaMax Dimming Parameters and Electronic Noise.

Potential electronic noise defect effecting 1.5% of AreaMax shipped between 12/13 and 06/16 and dimmed below 100% power. Please see SB20170606.1 for more information.

Legacy Lamp Error

“The selected lamp is a legacy lamp. ConnectLED app cannot write to this lamp.” ConnectLED Android is only able to read, and not write to, AreaMax with firmware A07 and earlier. If you must write to a legacy lamp please contact Evluma Customer Support. ConnectLED Windows writes to legacy lamps. Android and iOS do not.

Hardware Error Related to Time Setting

“This lamp has a hardware error related to the time setting. The lamp should be returned to Evluma.” SB20170606.1 outlines the most common cause behind this error message. Follow the instructions in SB20170606.1 Appendix A Android. If you have attempted to restore the Time Setting and you still receive the error message please contact Evluma Customer Support.

Dimming Error – SB20160519.1 (Clock Drift Error)

“ConnectLED has detected that you have set a dimming level less than 100% and it is creating clock drift per Service Bulletin SB20160519.1. What would you like to do?” Choose from the options presented. If resetting the dimming levels does not clear this message, please contact Evluma Customer Support for assistance.

Time not set

“Time setting on the lamp is incorrect. Please Disconnect and Connect your lamp with ConnectLED. If the problem persists, please replace the lamp and

contact Evluma Support 425-336-5800.” Please contact Evluma Support immediately.

Time Invalid

Connect to a lamp using ConnectLED to correct an invalid time. ConnectLED will set the time based on the tablet time.

No location

No location has been set for the lamp. Confirm that the tablet location is correct, See To Initialize ConnectLED GPS - WiFi/Google Maps Select the lamp and tap the Location button located half way down the Config screen. If the tablet location is desired location tap Use Tablet Location.

Lamp Malfunction

“Lamp is not operating properly. Please replace the lamp and contact Evluma Support 425-336-5800.” Please contact Evluma Support immediately.

For More Information

For More Information, or for Technical Support please contact your regional Evluma salesperson, or call:

425-336-5800, Option 2.

<http://www.evluma.com/contact.html>

Warranty: V2.1 tablets provisioned by Evluma warrantied for 6 months from the date of shipment.

Evluma, AreaMax, OmniMax, ConnectLED, FaultCast and Photocontrol Failsafe are trademarks of Express Imaging Systems, LLC. All rights reserved.