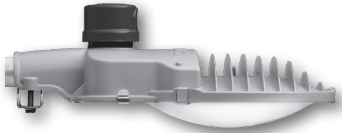


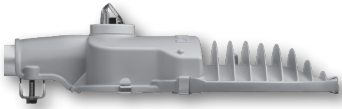
EVLUMA AREAMAX™

55W TYPE V LED STREET, AREA AND SECURITY LIGHTING
REPLACES HID DUSK-TO-DAWN LUMINAIRES 100-175W

AMAX 55 TYPE V



reuse existing photocontrol
with S3 option (dome lens shown)



evluma integrated photocontrol
with P option (flat lens shown)



CERTIFICATION DATA

UL 1598. MET Labs
IP66. IEC 60529
ASTM D2247-68
FM 4473
ANSI C136.31-2010 Level 2
Vibration Bridge/Overpass
DLC Qualified/ Lighting Facts
EPA under 0.5 sq ft

ENERGY DATA

Power Factor >99%
THD <10% at 120 VAC
THD <20% at 277 VAC
<1/2W off-state power
Driver Lifetime >100,000 hrs
-40°C Min / 50°C Max AM Temp

SHIPPING DATA

Pallet Qty:
56 units, 580 lbs

DESCRIPTION

The AreaMax LED luminaire for street and area lighting is a robust, utility-grade luminaire designed to last for years. Easy to install, the AreaMax saves energy and maintenance time. Choose the 55W model to meet 5000+ lumen goals with a low wattage. Just one more way Evluma helps you to maintain fixture uniformity with the greatest number of output options. Each unit ships with Photocontrol Failsafe™ built-in and the option to activate ConnectLED™ features with the purchase of the Evluma custom Bluetooth application.

Construction & Finish

Cast aluminum housing with gray powder coat. Hinged access panel is galvanized steel with spring clips to allow for easy open and close. *Bronze color option available. Please inquire.

Optical (lens)

Textured glass and a white, optical-grade reflective film liner combine to create a bright, diffuse light.

Electrical

Evluma proprietary Class II driver. Dimmable. Patented. 90-277 VAC 50/60 Hz (AMAX 55: .56 Amps at 120VAC) High capability surge protection for 20kV/10kA per IEEE/ANSI C62.41.2 - 2002. Location Category C-High.

Thermal Management

LED life is ensured by thermal management protection circuitry that controls current levels to the LEDs based on temperature. Critical components were selected for their minimal thermal resistance then paired with a custom light engine and casting design to maximize cooling.

Mounting

Stainless steel tenon clamp and stainless steel tri-lobe screws accept 2", or 1 1/4" diameter arm.

Coastal Package Option

Corrosive coastal environments have unique requirements. A housing made from cast aluminum alloy with an anti-corrosion chromate coating plus an aluminum access panel, a stainless steel tenon clamp and all stainless steel fasteners guarantee longevity in harsh, wet environments. Required for applications 2000 ft from a salt water body.



Dark Sky Compliant Models

The IDA (International Dark Sky Association) requires luminaires to be fully shielded, emitting no light above 90 degrees and have a listed correlated color temperature (CCT) configuration of 3000K or below. One 55W model AreaMax bears the IDA Fixture Seal of Approval: 55W 3K V-C. This model is also certified by the **Community Friendly Lighting Program** with <=22% SPD between 430-530 nm.

Warranty

Ten-year warranty.

Visit www.evluma.com/products/warranty/

lighting
facts
LED Product Partner

EVLUMA AREAMAX™

55W TYPE V LED STREET, AREA AND SECURITY LIGHTING REPLACES HID DUSK-TO-DAWN LUMINAIRES 100-175W

ORDERING INFORMATION

SAMPLE NUMBER: AM-55-5K-V-D-P-STD-6

PRODUCT FAMILY	WATTS	CCT	DISTRIBUTION TYPE	LENS (options)	PHOTOCONTROL SOCKET (options)	ENVIRONMENTAL PACKAGE (options)	LEADS (options)
AM = AreaMax	55 = 55 watts	3K = 3000K 4K = 4000K 5K = 5000K	V = type V	D = dome C = full cutoff	P = integrated S3 = 3 pin socket S7 = 7 pin socket	STD = std outdoor CST = coastal	6 = 66" 10 = 10' 20 = 20' N = none

PERFORMANCE 55W (recommended to replace 100-175W HID)

Code	CCT	CRI	Lumens	LED mA	BUG	IES File Numbers
3K (C)	3000K	>70	>5000	1000mA	B2-U0-G1	ITL88125
3K (D)	3000K	>70	>5100	1000mA	B2-U2-G2	ITL88124
4K (C)	4000K	>70	>5300	1000mA	B2-U0-G1	ITL88127
4K (D)	4000K	>70	>5300	1000mA	B2-U2-G2	ITL88126
5K (C)	5000K	>70	>5300	1000mA	B2-U0-G1	ITL88129
5K (D)	5000K	>70	>5600	1000mA	B3-U2-G2	ITL88128

LUMEN MAINTENANCE

L70 (10,000) >60,000 hrs
LM at 10,000 hours = 99%
LM at 100,000 hours = > 90%

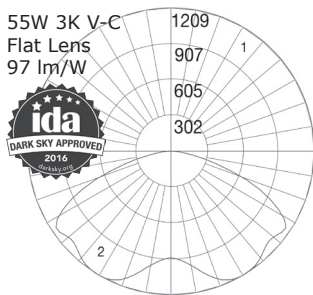
ACCESSORIES

AMAX-LTS stainless steel light trespass shield (order separately)

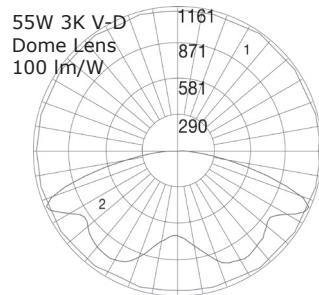
DISTRIBUTION OF LUMINOUS INTENSITY

View complete IES files at <http://evluma.com/products/areamax>

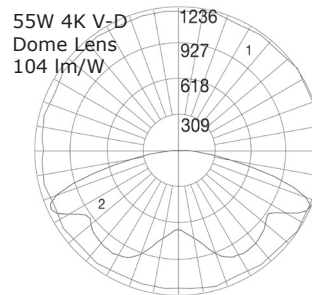
Polar Candela Distributions: Vertical Plane (1) and Horizontal Cone (2) through maximum candela



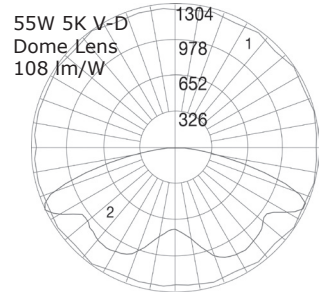
Max Candela: 1209 at 32.5°



Max Candela: 1611 at 67°

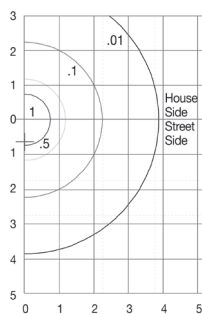


Max Candela: 1236 at 67°

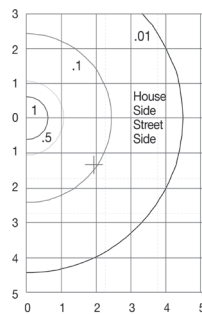


Max Candela: 1304 at 65°

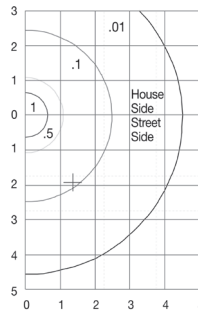
Isofootcandle Lines of Horizontal Illuminance: grid distance 25 ft (7.62 m) mounting height



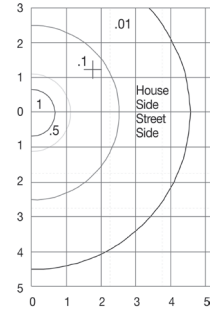
.01 fc at over 3 25' mtg htgs



.01 fc at over 4 25' mtg htgs



.01 fc at over 3 25' mtg htgs



.01 fc at 4.5 25' mtg htgs

Copyright © 2017 Express Imaging Systems, LLC. Evluma, OmniMax, AreaMax, ConnectLED, and Photocontrol Failsafe are trademarks of Express Imaging Systems, LLC. All rights reserved. Content is subject to change. For informational purpose only. MET labs logo is a registered trademark of MET labs.

3600 Lind Ave SW, Suite 140, Renton, WA 98057 425-336-5800 www.evluma.com

